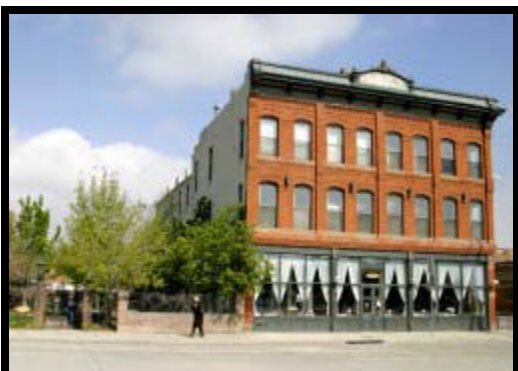
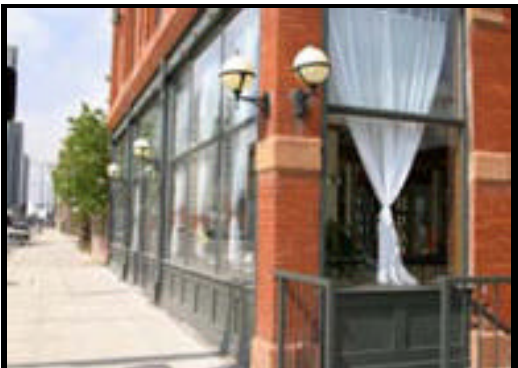
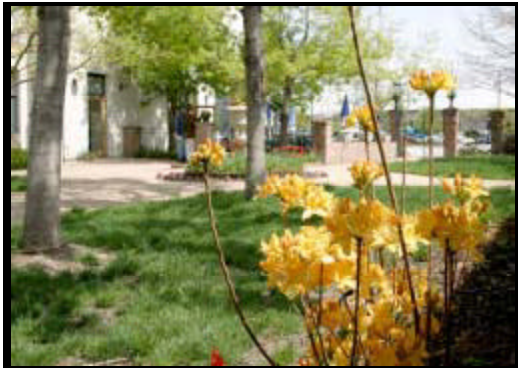


# Paris Hotel Building

IN THE HEART OF THE CITY



## COMMERCIAL PROPERTIES AT THE PARIS HOTEL BUILDING .....



The elegant Paris Hotel Building is listed on the National Register of Historic Places and is conveniently located in the middle of the Ballpark Neighborhood, several blocks from Coors Field, LoDo and Central Downtown Denver. There is easy access to I-25 / I-70 to the airport and mountains.

Our commercial spaces vary from 750 to 5,500 square feet and provide a unique setting with access to 22<sup>nd</sup> Street and the beautiful Paris Hotel Courtyard/Gardens. The units all have high ceilings and exposed brick with bathroom facilities in each unit. We are pleased to have the cozy neighborhood restaurant "The Lobby" on the main level. The restaurant is open for lunch and dinner providing additional walk by traffic. There are 17 residential condominiums on the upper floors that create an interesting mixed use of the property.

The Paris Hotel Courtyard is one of downtown Denver's secret gardens. In the past 20 years Denverites have had weddings, get-togethers, or enjoyed a glass of wine in the beauty of the seasonal courtyard.



## NOW AVAILABLE .....



Please click [HERE](#) to see if we have any vacancies.



## CONTACT US .....



Please click [HERE](#) to contact R. Merrill main offices.